



CONE MILL

OPERATION'S MANUAL



The total or partial reproduction of this manual
is prohibited by any means, whether printed or electronic;
without the prior, express and written authorization of the author.

CONE MILL

OPERATION'S MANUAL

INDEX

GENERAL SAFETY INSTRUCTIONS	4
CAUTION.....	5
COMPONENTS	6
ELECTRICAL INSTALLATION	7
OPERATING INSTRUCTIONS	8

GENERAL SAFETY INSTRUCTIONS

WARNING: To reduce the risk of injury, read all instructions properly.

Failure to follow the instructions listed below can cause electric shock, fire, serious injuries, mutilation and/or damage to the equipment.

A. SAFETY IN THE WORK AREA.

- * Keep the work area clean and lit. Crowded or dark areas lead to accidents.
- * Keep children, customers, and non-company personnel away from the electrical and mechanical operation area of the equipment.
- * It is recommended to have a minimum space of one meter or three feet around the machine for safety measure and to optimize work.

B. ELECTRICAL SAFETY.

- * Machinery connections must be adapted to the power outlets.
- * Do not use adapters for the switches: since you run the risk of receiving an electric shock.
- * Do not expose the switches and/or electrical connections to rain or humidity. If water enters these elements, there is a risk that they will break down or suffer an electric shock.
- * Use cable in a single piece, if there are joints in the connections these can produce a short circuit.
- * Do not expose cables or electrical connections to heat, oil, sharp edges, or moving parts, as damaged cables can cause electric shock or short circuit.

C. PERSONAL SAFETY.

- * Do not operate the equipment if you are tired, under the influence of alcohol or drugs.
- * Wear appropriate clothing, do not wear loose clothing, or necklaces, earrings, watches, if you have long hair wear a tie to keep it up.
- * Do not climb on the structure of the machine for any reason, falls or injuries may occur.
- * Avoid using headphones, cell phones or any other equipment that works as a distraction to the operator.
- * Make correct use of personal protective equipment if any maintenance is to be carried out on the machine.
- * If any change is made to the model or component of the equipment, be it electrical or mechanical related, it must be de-energized and stop the machine completely to avoid accidents.
- * Keep limbs away from all moving parts.

CAUTION

The following symbols indicate the safety measures that must be taken before and after starting up the equipment.



ELECTRICAL RISK In which you can suffer electric shocks, if you do not comply with the electrical safety provisions.

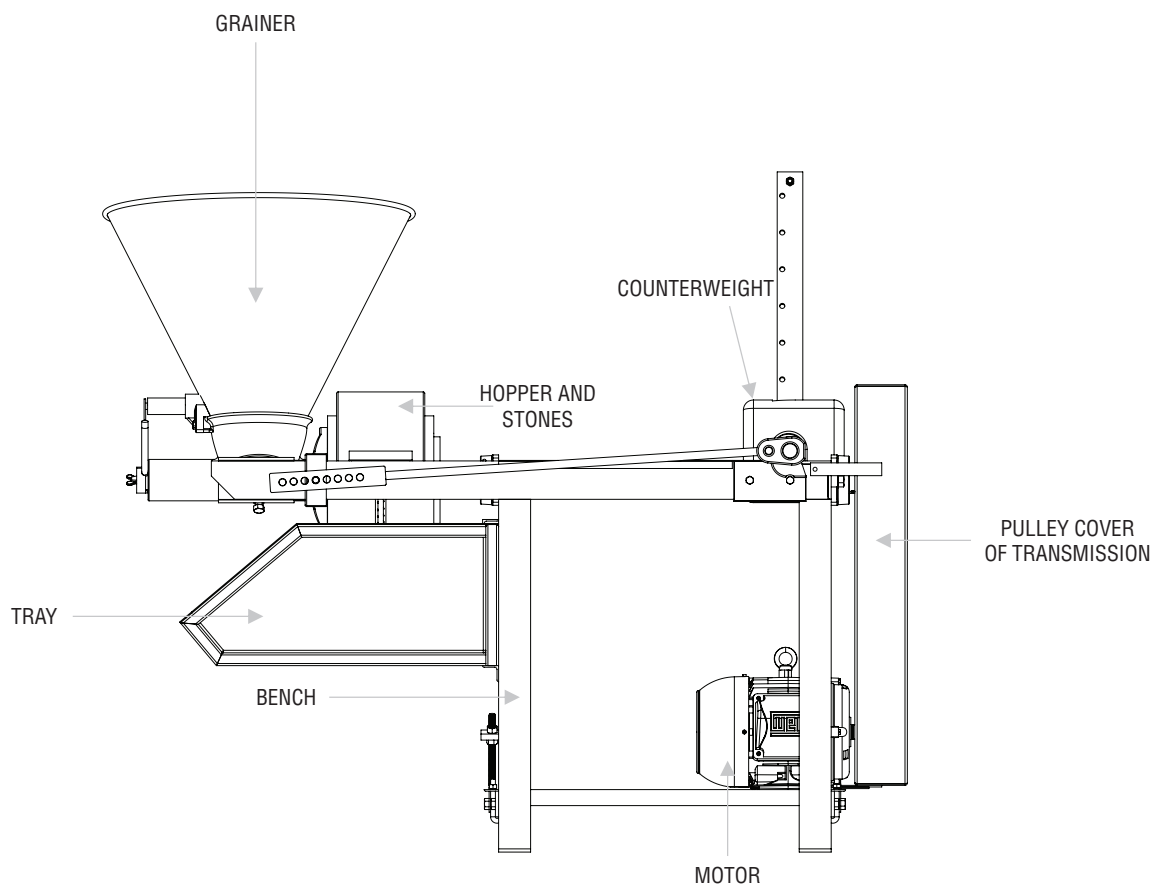


GEAR RISK Keep your hands away from the chains and gears of the machine.



RISK POINTS Keep hands away from risk points.

COMPONENTS



ELECTRICAL INSTALLATION

Verify that the electrical connection is 220v. Inspect that there are no short circuits, no loose or bare wires.

Ensure that all cables are isolated and without contact, check contactors and switches in good condition. It is recommended to use a 8 gauge cable for the installation.



ELECTRICAL INSTALLATION	
A	220v electrical installation
B	8 gauge cable (conduit cable)

CONE MILL OPERATION'S MANUAL



1

Place band covers.



2

Place tray.



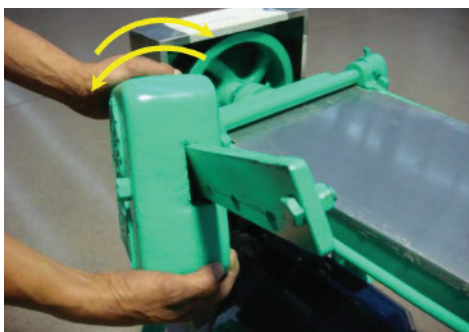
3

Verify the correct assembly of the stone in the auger plate.



4

Verify the correct assembly of the stone in the cone plate.



5

Before moving the lever, secure the counterweight by turning it and inserting the bolt into the desired hole. To release it, turn it again and move it in the desired direction.

CONE MILL OPERATION'S MANUAL

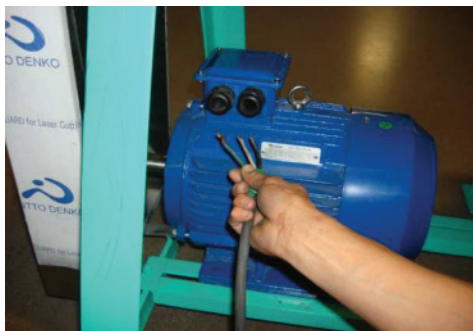


6

Use the counterweighted lever to adjust the drilled sills into the cone side pins on both sides.

By raising the lever the stones are separated and by lowering it the stones are squeezed.

Before putting it into operation, check that the stones are not completely tightened to avoid dry rubbing.



7

Connect to a 220v two or three phase outlet as the case may be, following the diagram on the plate or on the reverse of the motor cover.

It is recommended to use a 50-60 amp breaker and #8 wire.

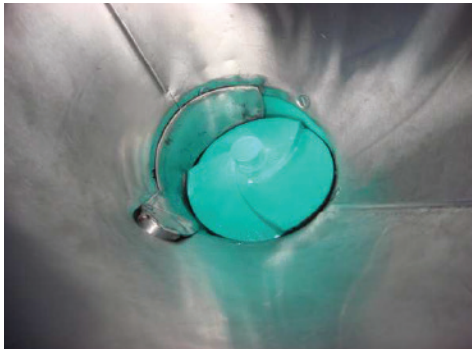


8

Loosen the wing nut to release the lever that controls the cone tab.



CONE MILL OPERATION'S MANUAL



By directing the lever downwards, the tab closes, preventing the circulation of corn.



When the lever is pulled up, the tab rises allowing the circulation of corn.



9

Move the counterweight up to create more friction for a thinner dough, or vice versa for a thicker dough.



HEADQUARTERS

AV. INDUSTRIAS #3665, ZONA INDUSTRIAL
CP 78395 SAN LUIS POTOSÍ, SLP. MÉXICO



444 127 11 80



444 129 29 79

info@manufacturaslenin.mx

MEXICANTORTILLAMACHINE.COM