



# MLTC-40 PRESSES

OPERATION'S MANUAL



The total or partial reproduction of this manual  
is prohibited by any means, whether printed or electronic;  
without the prior, express and written authorization of the author.

# **MLTC-40 PRESSES**

OPERATION'S MANUAL

---

**INDEX**

GENERAL SAFETY INSTRUCTIONS.....	4
CAUTION.....	5
GAS AND ELECTRICAL INSTALLATION.....	6
COMPONENTS.....	7
OPERATING INSTRUCTIONS .....	8
CLEANING AND MAINTENANCE .....	9
LUBRICATION.....	13

## GENERAL SAFETY INSTRUCTIONS

**WARNING:** To reduce the risk of injury, read all instructions properly. Failure to follow the instructions listed below can cause electric shock, fire, serious injuries, mutilation and/or damage to the equipment.

### A. SAFETY IN THE WORK AREA.

- \* Keep the work area clean and lit. Crowded or dark areas lead to accidents.
- \* Do not operate the equipment without first checking all gas connections with soapy water, to ensure that there are no leaks that could cause an explosion.
- \* Keep children, customers and non-company personnel away from the electrical and mechanical operation area of the equipment.
- \* It is recommended to have a minimum space of one meter or three feet around the machine for safety measure and to optimize work.

### B. ELECTRICAL SAFETY.

- \* Machinery connections must be adapted to the power outlets.
- \* Do not use adapters for the switches: since you run the risk of receiving an electric shock.
- \* Do not expose the switches and / or electrical connections to rain or humidity. If water enters these elements, there is a risk that they will break down or suffer an electric shock.
- \* Use cable in a single piece, if there are joints in the connections these can produce a short circuit.
- \* Do not expose cables or electrical connections to heat, oil, sharp edges, or moving parts, as damaged cables can cause electric shock or short circuit.

### C. PERSONAL SAFETY

- \* Do not operate the equipment if you are tired, under the influence of alcohol or drugs.
- \* Wear appropriate clothing, do not wear loose clothing, or necklaces, earrings, watches, if you have long hair wear a tie to keep it up.
- \* Do not climb on the structure of the machine for any reason, falls or injuries may occur.
- \* Avoid using headphones, cell phones or any other equipment that works as a distraction to the operator.
- \* Make correct use of personal protective equipment if any maintenance is to be carried out on the machine.
- \* If any change is made to the model or component of the equipment, be it electrical, mechanical or gas related, it must be de-energized, cut off the gas supply and stop the machine completely to avoid accidents.
- \* Keep limbs away from all moving parts.

### CAUTION

The following symbols indicate the safety measures that must be taken before and after starting up the equipment.



**HOT HAZARD** Some parts of the machine are hot while in operation.



**CRUSHING HAZARD** Keep hands away from the cam press when be in operation.



**ELECTRICAL RISK** In which you can suffer electric shocks, if you do not comply with the electrical safety provisions.



**GEAR RISK** Keep your hands away from the chains and gears of the machine.



**DO NOT COVER THE BARREL'S AIR INTAKE.** Keep your hands away from the air inlet of the barrel.

# MLTC-40 PRESSES

OPERATION'S MANUAL

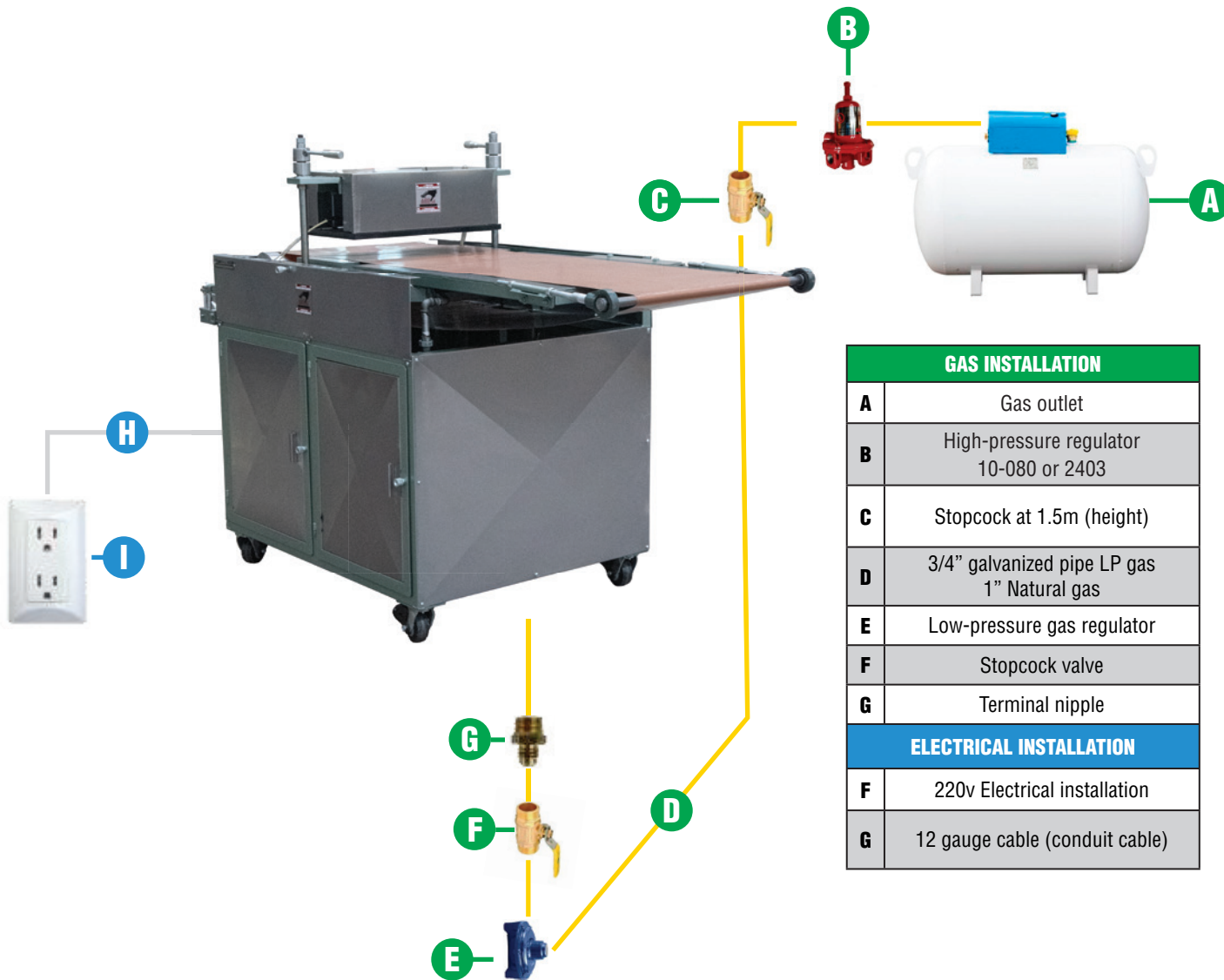
## GAS AND ELECTRICAL INSTALLATION

A model 10-080 high pressure regulator, with a pressure gauge (0-7 kg), must be installed at the outlet of the gas tank to verify the correct supply pressure. The pipe used for the connection is 1" in diameter, either type L copper or 40 gauge black tube.

The length of the pipe should not exceed 10 meters, from the outlet of the gas tank.

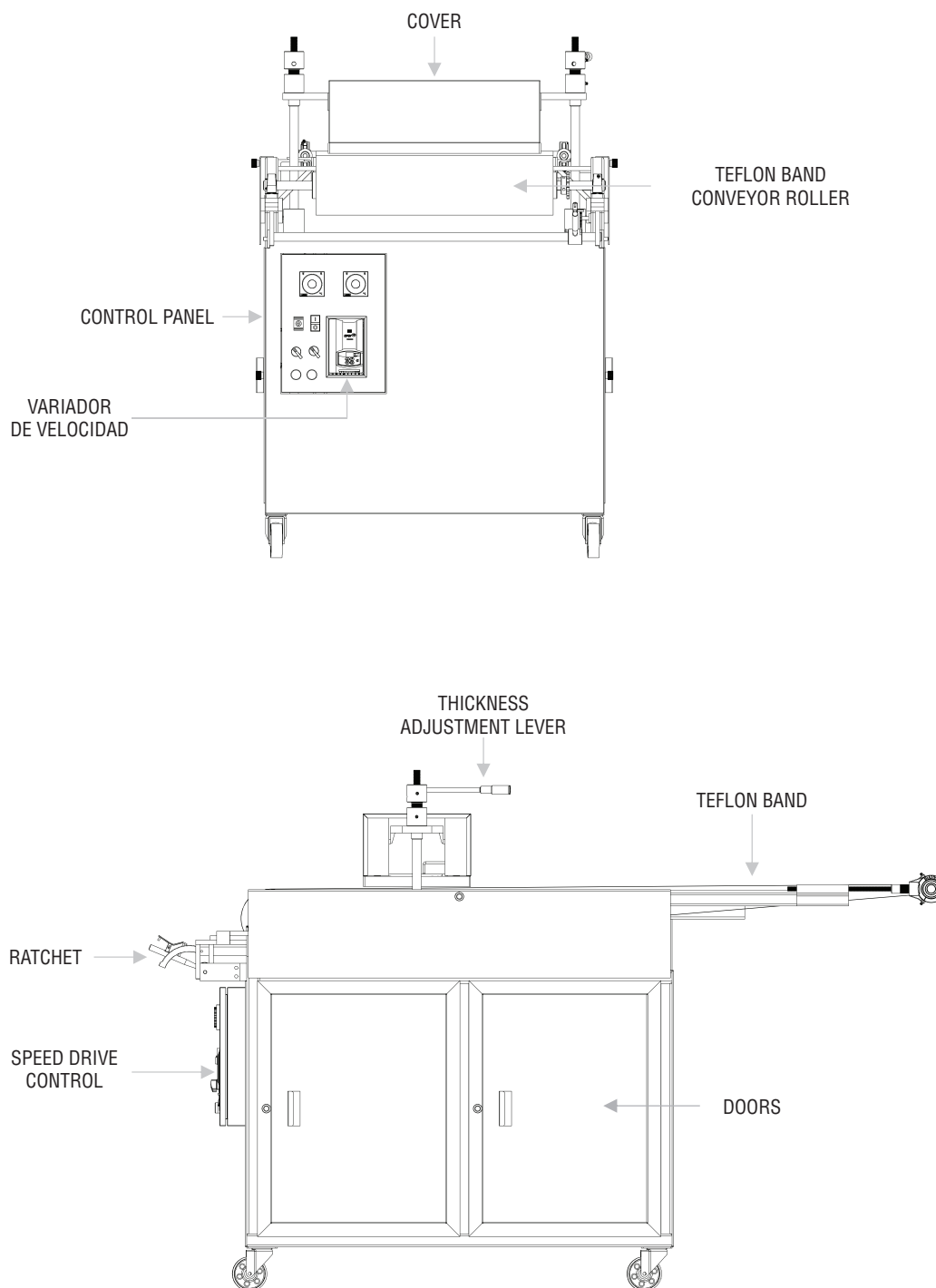
A union nut must be installed between the stopcock and the low pressure regulator. A low pressure regulator must be installed before the machine.

Verify that the electrical connection is 220v. No short circuits or loose or uninsulated wires.

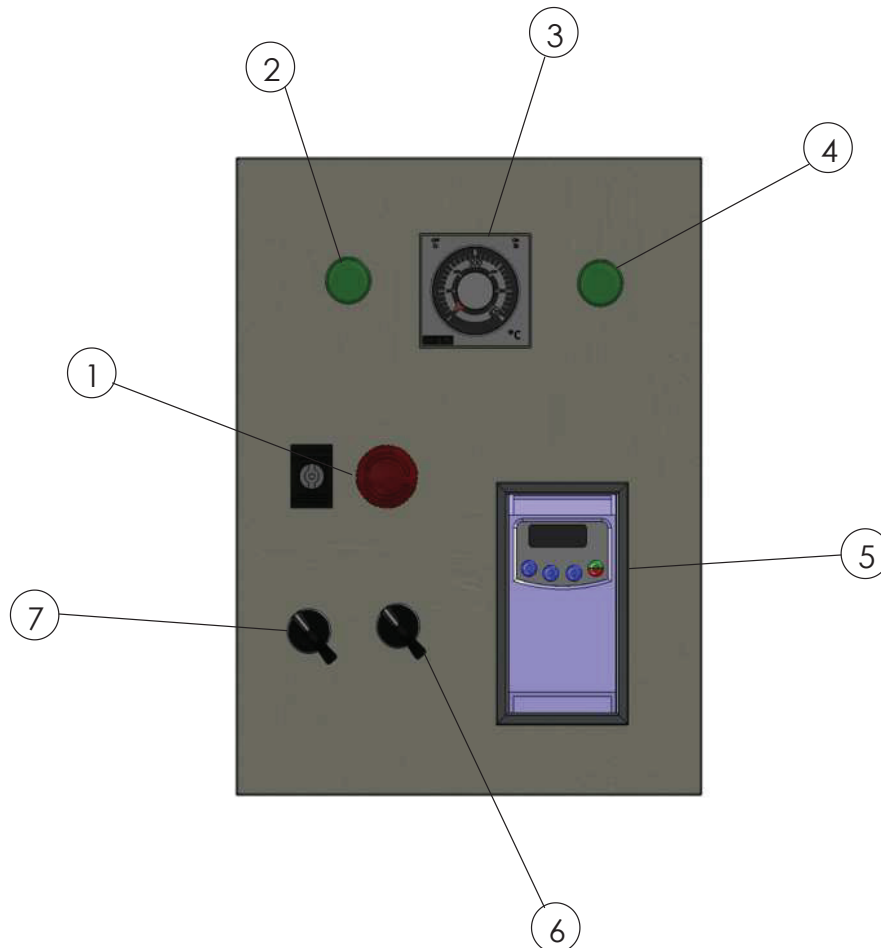


# MLTC-40 PRESSES OPERATION'S MANUAL

## COMPONENTS



### CONTROL PANEL



NO.	DESCRIPTION	FUNCTION
1	ROTATING EMERGENCY STOP BUTTON	STOP THE PRESS IN ITS ENTIRETY
2	GREEN PILOT LIGHT	LIGHT INDICATES EQUIPMENT IN OPERATION
3	TEMPERATURE CONTROL	ACTIVE TEMPERATURE CONTROL
4	GREEN PILOT LIGHT	LIGHT INDICATES EQUIPMENT IN OPERATION
5	SPEED DRIVE CONTROL	INCREASE OR DECLINE THE SPEED OF THE OVEN DRIVE MOTOR
6	2 POSITION SELECTOR	ACTIVATES SPEED DRIVE
7	2 POSITION SELECTOR	ACTIVATES TEMPERATURE CONTROL



# MLTC-40 PRESSES OPERATION'S MANUAL



1

Connect press to power outlet



2

Connect to gas outlet with  
high pressure regulator



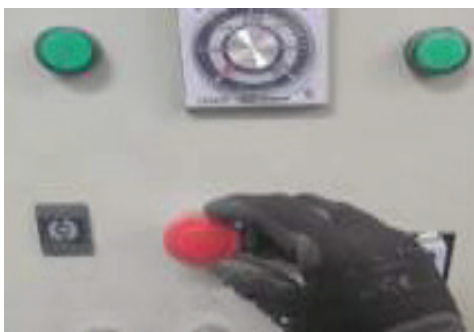
3

Connect the gas intake to the terminal nipple  
press connection



4

Ensure gas intake tightening  
to prevent leaks



5

Turn the emergency stop button  
to energize the circuit with electrical current



6

Turn selector and speed variator will turn on

# MLTC-40 PRESSES

OPERATION'S MANUAL



7

Turn the temperature control dial



8

Turn the temperature control knob.  
The green indicators will light up.



9

When the plates have the temperature  
desired, the temperature control will turn off.



10

Press the speed drive button (ON)



11

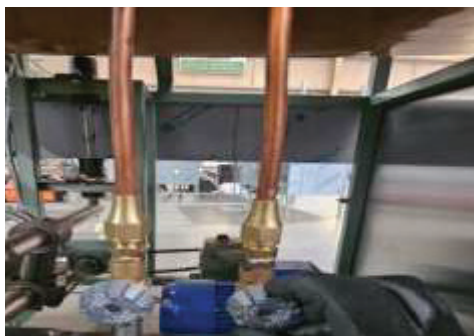
Modify the working speed  
by pressing the up button



12

Modify the working speed  
by pressing the down button

# MLTC-40 PRESSES OPERATION'S MANUAL



- 13** Supply the press with gas, regulating the intensity of the flow with the globe cocks.



- 14** Turn on L and H type flutes



- 15** Adjust the thickness of the dough by turning the two levers to adjust the size of the tortilla.



- 16** Adjust the uniformity of the tortilla by turning the inner locknut until it is level.



- 17** Take dough ball



- 18** Place the dough ball on the conveyor belt

# MLTC-40 PRESSES

OPERATION'S MANUAL

---



**19**

Check the shape, thickness and roundness



**20**

Start production

## MAINTENANCE

Clean the machine before and after using it.

The duration of the spare parts will depend on the preventive maintenance and care taken to the machine.

The more frequently this maintenance is done, the parts will have a longer life.

## LUBRICATION

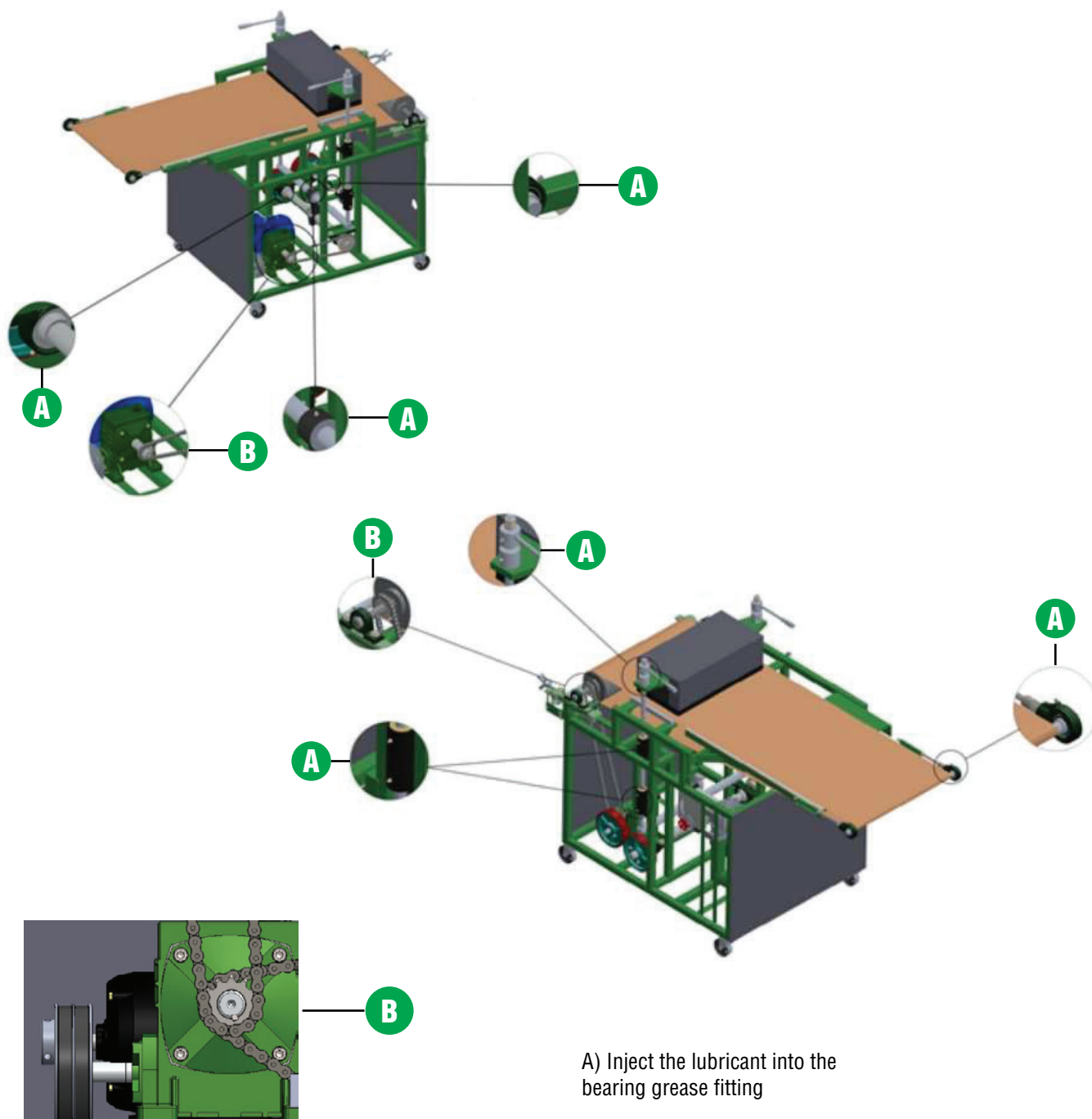
The following table shows the parts, the type of lubricant and the frequency with which the machine and its parts should be lubricated.

PART	LUBRICANT	PERIOD
Chain	SAE 250	3 times per week
Bearing	BAT 3 Grease	Every 3 days
Gears	SAE 250	Every week
Reducer	SAE 80/90 mineral oil	Every 3 monts

# MLTC-40 PRESSES

OPERATION'S MANUAL

The following figures show the schematic location of the parts that require lubrication.



A) Inject the lubricant into the bearing grease fitting

B) 80/90 mineral oil

It is recommended to change the oil every three months. The used oil must be drained and 400ml of new SAE 80/90 mineral oil must be poured.



## **HEADQUARTERS**

AV. INDUSTRIAS #3655, ZONA INDUSTRIAL  
CP 78395 SAN LUIS POTOSÍ, SLP. MÉXICO



444 127 11 80



444 129 29 79

[info@manufacturaslenin.mx](mailto:info@manufacturaslenin.mx)

[MEXICANTORTILLAMACHINE.COM](http://MEXICANTORTILLAMACHINE.COM)